



Annual Report of the

CENTRE FOR ENTREPRENEURSHIP
RAPID INCUBATOR (CFERI)

2020 Financial Year (FY)

LOVEDALE TVET COLLEGE

TABLE OF CONTENTS

- 1. GLOSSARY OF TERMS/ABBREVIATIONS**
- 2. CFERI STEERING COMMITTEE AND COLLEGE ACTING PRINCIPAL'S FOREWORD**
- 3. CENTRE MANAGER'S MESSAGE**
- 4. VISION, MISSION AND VALUES OF THE CFERI**
- 5. OVERVIEW**
- 6. GOVERNANCE**
 - 6.1 LOVEDALE TVET SMT AND ORGANOGRAM**
 - 6.2 LOVEDALE TVET COLLEGE SENIOT MANAGEMENT TEAM**
 - 6.3 LOVEDALE TVET COLLEGE STEERING COMMITTEE**
 - 6.4 LOVEDALE TVET COLLEGE CFERI STAFF**
 - 6.5 MANAGEMENT TRAINING AND DEVLOPMENT**
- 7. CENTRE FOR ENTREPRENEURSHIP AND RAPID INCUBATOR**
 - 7.1 LAUNCH**
 - 7.2 PERFORMANCE**
 - 7.3 SUCCESS STORIES**
 - 7.4 STUDENT ENTREPRENEURSHIP SUPPORT TEAMS**
 - 7.5 CFERI MAKERSPACE**
- 8. FINANCIAL REPORT**

1. GLOSSARY OF TERMS/ABBREVIATIONS

CFERI	Centre for Entrepreneurship Rapid Incubator
DSDB	Department of Small Business Development
DHET	Department of Higher Education and Training
SEDA	Small Enterprise Development Agency
SMME	Small Medium and Micro Enterprises
TVET	Technical and Vocational Education and Training
SESP	Student Entrepreneurship Support Programme (SESP)
PSU	Partnership Skills Unit
DTI	Department of Trade and industry
SIF	Specialised Industrial Facility
BOA	Board of Advisory committee
PSC	Project Steering Committee
CM	Centre Manager
BDO	Business Development Officer
APP	Annual Performance Plan
ARC	Audit and Risk Committee
EXCO	Executive Committee

2. CFERI STEERING COMMITTEE AND COLLEGE ACTING PRINCIPAL'S FOREWORD

Lovedale TVET College has an extremely important responsibility of developing critical scarce skills within each of its students. This will enable them to become responsible young people that will successfully contribute to the economy of South Africa. Ultimately, Lovedale TVET College aims to contribute to the development of creative thinking skills. Students are encouraged to invest in entrepreneurial activities, instead of seeking work from others. The fourth industrial revolution comes with its own set of technological interventions, new work opportunities that never existed before and critical skills needs for our students to become successful in future ventures.

“The Team! The Team! The Team! – Bo Schembechler

Lovedale TVET College can only succeed if all stakeholders, as a team, work hand in glove towards achieving the same objectives. It is therefore important to acknowledge the continuous support that the college received from the Small Business Development Agency (SEDA) and various other partners such as the SETAs, the Department of Trade and Industry (the dti) and the Department of Small Business Development (DSBD). This has all made it possible for Lovedale to improve substantially on its offering to both learners and the community.

For any organisation to be functionally efficient and effective, acknowledgment and appreciation must go to the management and staff. The contribution of every staff member is essential to the success of our endeavours. Lovedale TVET College is proud of all the initiatives driven by the CFERI and is looking forward to the impact that it can continue to make. This includes the expansion of the CFERI by means of the MakerSpace at the King William's Town Campus. The support we received from SEDA through their funding, training programmes and latest technological equipment to the MakerSpace is sincerely appreciated. It has ensured that we can truly make a significant impact in the entrepreneurial field of Information and Computer Technology (ICT).

Furthermore, the resilience shown in the CFERI operations despite COVID-19, must be commended. Students who had existing small businesses were still shown the support they required to keep their businesses operational and functional, despite challenges presented by the virus. Others continued to receive the valuable training and entrepreneurial skills provided by the CFERI incubator programme. Thus, in conclusion, I wish to thank all stakeholders once again for their dedication and commitment to Lovedale TVET College. I trust that you will enjoy paging through this Annual Report.



Acting Principal
Mr M Manaka

3. CENTRE MANAGER'S MESSAGE

Dear Reader

It is with great pleasure that I present to you the Annual report, challenges and achievements of Lovedale TVET College's Centre for Entrepreneurship Rapid Incubator (CFERI) for the financial year of 2020. The report includes the core business of Lovedale CFERI as stated below:

- Number of jobs created and jobs sustained
- Number of clients supported and students trained
- SMMEs established, supported and turnover (revenue generated by CFERI clients)

Entrepreneurship is the process of conceptualising, organising, launching and through innovation, nurturing a business opportunity into a potentially high growth venture in a complex and unstable environment (Rwigema & Venter, 2004). Entrepreneurship education imparts entrepreneurship qualities and skills to students. TVET Colleges especially, encourage students to start their own businesses after the completion of their studies. The mandate of CFERI is to encapsulate all of the above-mentioned. By using TVET colleges, entrepreneurship education; and imparting entrepreneurial skills, SEDA is able to develop small businesses.

Lovedale TVET College's CFERI was launched in the 1 June 2018 by the Deputy Minister of Small Business Development (MP) Mr Cassel Mathale. It has since established stakeholder partnership with numerous institutions, government departments and local business forums in the Lovedale TVET College community. Through these partnerships and working relations, the CFERI has been able to reach number of student entrepreneurs, aspiring entrepreneurs and local businesses that are struggling to make ends meet, through the CFERI incubation program and business development and support services.



AZOLA MGQUBA
CENTRE MANAGER

4. VISION AND MISSION

Vision Statement

To grow, develop, nurture and sustain budding entrepreneurs.

Mission statement

To provide an entrepreneurial and innovative environment that will make a visible impact on agriculture, social and economic development in the region by:

- Offering incubation and business
- Support programmes;
- The formation of strong linkages with key partners; and
- Focusing on the holistic development of young entrepreneurs.

Values

The centre for entrepreneurship is committed to upholding:

- Entrepreneurial development
- A culture of efficiency and good work
- Ethics
- A culture of effective & interactive
- teaching and learning
- Easy access to information

4. OVERVIEW

The CFERI programme is an entrepreneurial initiative that is focused on assisting college and university graduates in starting their own businesses. The project is funded by the Department of Small Business development (DSBD) and is implemented by the Small Enterprise Business Development Agency (SEDA).

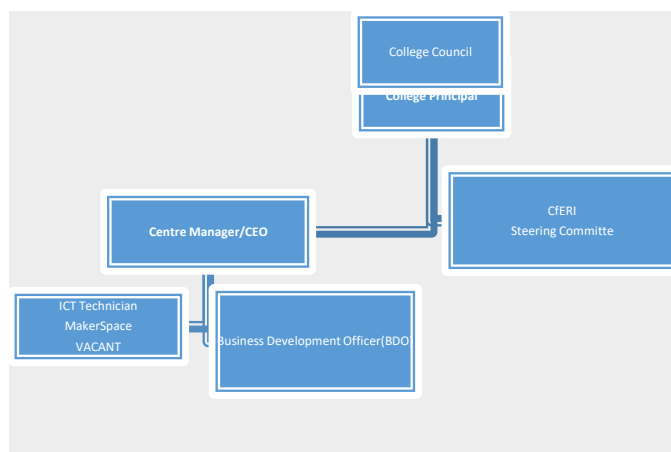
5. THE RAPID INCUBATOR PROGRAMME

The Rapid Incubation Programme is an incubation model based on international standards that allows TVET students and graduates an entrepreneurial platform to commercialise their vocational skills. The Lovedale CFERI was officially launched on the 1st of June 2018 at Lovedale TVET College Alice Campus. Lovedale College has recruited a number of students and youth to attend training interventions and participate in the Incubation program for a period of 18 months. The first group of students were those that had completed their studies, including college graduates and community members in the enterprise development space. The new intake of incubatees that will be recruited for the CFERI Makerspace based at Lovedale TVET College in King Williams Town Campus, is students and community members, unemployed youth and college and university graduates in the ICT sector. Training is also provided to the community members in the Buffalo City surroundings.

The CFERI in Alice continues to enjoy support and interest from agricultural business within its surrounding area. The centre trains 45 individuals and assists 20 clients on average each month. The CFERI has been consistent for the 2019 Financial year and has been able to meet the targets in the above-mentioned areas. The 2019/2020 year has been geared towards building stronger capacity within the Centre as well as expanding the client base over a greater geographic region.

6. GOVERNANCE

6.1 LOVEDALE TVET COLLEGE CFERI ORGANOGRAM



According to the organogram, the Centre Manager enjoys the support of the CFERI steering committee. Regular reports are given to the College Principal, who in turn reports to the College Council.

6.2 LOVEDALE TVET COLLEGE MANAGEMENT



Pictured above from left to right: Mandla Manaka: Acting Vice Principal; Zolani Chola, Vice Principal: Corporate Services; and Siyabonga Somlota, Vice Principal: Academics

COLLEGE MANAGEMENT:

Acting Principal: Mandla Manaka

Vice Principal, Academics: Siyabonga Somlota

Vice Principal, Corporate Services: Zolani Chola

Acting CFO: Mandlilakhe Mili

Acting Registrar: Ciksiwa Ganto

6.3 LOVEDALE TVET COLLEGE STEERING COMMITTEE

- ACTING PRINCIPAL (STEERING COMMITTEE CHAIRPERSON)
- CENTRE MANAGER: CFERI
- SEDA REPRESENTATIVE
- TWO DEPUTY PRINCIPALS: ACADEMIC SERVICES AND REGISTRAR
- ONE REPRESENTATIVE FROM EACH OF THE 3 CAMPUS (LECTURERS)

6.4 LOVEDALE TVET COLLEGE CFERI STAFF



Centre Manager: Azola Mgquba



*Business Development Officer:
Siphokazi Ngcayechibi*

In addition, the centre has employed two students on an internship basis for the following purposes

1. Marketing and Communication
2. Administration and Operations (Business Development)

6.5 ENTERPRISE DEVELOPMENT ACTIVITIES

Due to covid19, Lovedale TVET College did not have any training and development programs.

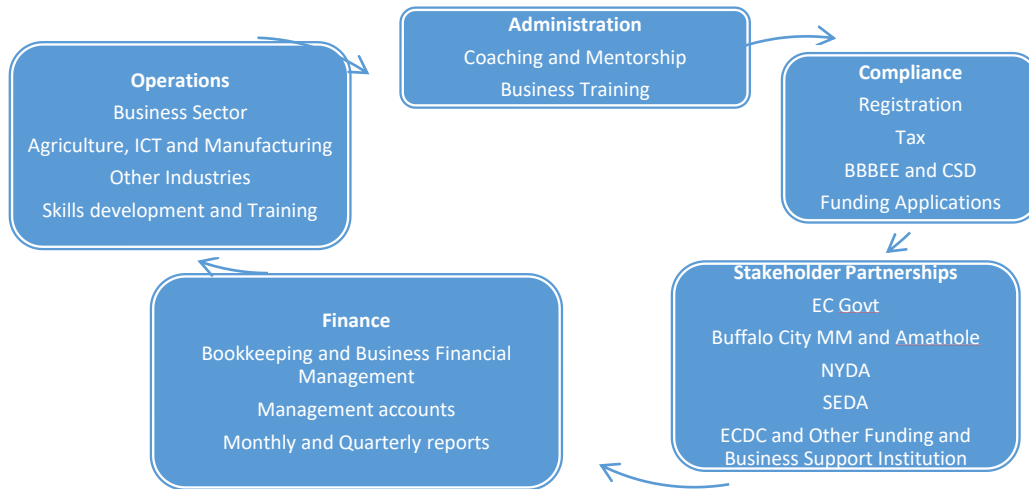
7. CENTRE FOR ENTREPRENEURSHIP AND RAPID INCUBATOR

7.1 CFERI

The Deputy Minister of Department of Small Business Development (DSBD), Honourable Cassel Mathale officially launched the Lovedale TVET College Centre for Entrepreneurship and Rapid Incubator in Alice, Eastern Cape on 1 June 2018. This centre services TVET college graduates and entrepreneurs in Alice, its surrounding villages and townships, focusing specifically on youth.

Lovedale TVET College has three campuses, with each one addressing particular needs of the community in which it's based: Alice Campus, in the little town of Alice in the Eastern Cape and the site of the original Lovedale; King Campus and Zwelitsha Campus both in King William's Town. Lovedale TVET College has a long and prestigious history of education in South Africa. Although the institution has evolved and changed direction many times over the years, it has nonetheless remained an educational institution that has always had the interests of the surrounding community at heart. The main drivers of the local economy are agriculture, tourism and hospitality, services industry and informal sector. The college contributes to the growth of the economy by encouraging the development of small enterprises, and partnering with industries in and outside the province.

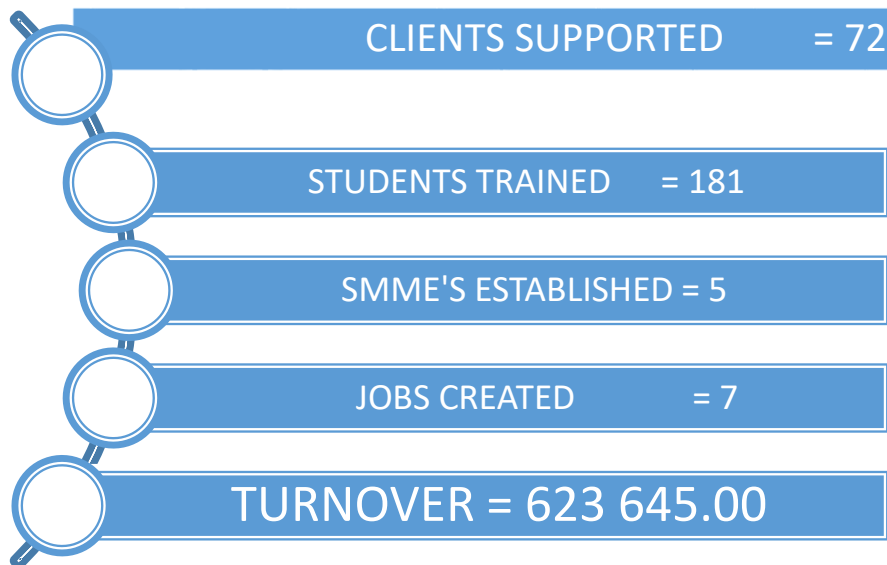
Lovedale TVET College has developed relationships with local municipalities, universities, Local Government Departments, Small Medium and Micro Enterprises and SETAs in the critical area of skills development. These partnerships have grown exponentially in the last five years sustaining the college and community development. The Lovedale CfE and Rapid Incubator centre is strategically located to focus on the development of entrepreneurs who are in predominant local economic activities in the area, including agriculture (farming, piggery and poultry businesses), tourism and hospitality and informal enterprises.



Lovedale CFERI's support to enhance entrepreneurial ecosystem

The Lovedale CFERI has already recruited 30 incubates for business training. Theoretical training commenced on 1 November 2017. The recruitment criteria focussed on youth and women with the most viable business ideas. Furthermore, the CFERI will support students and local businesses with business support services such as business training, coaching and mentorship.

8.2 PERFORMANCE INFORMATION



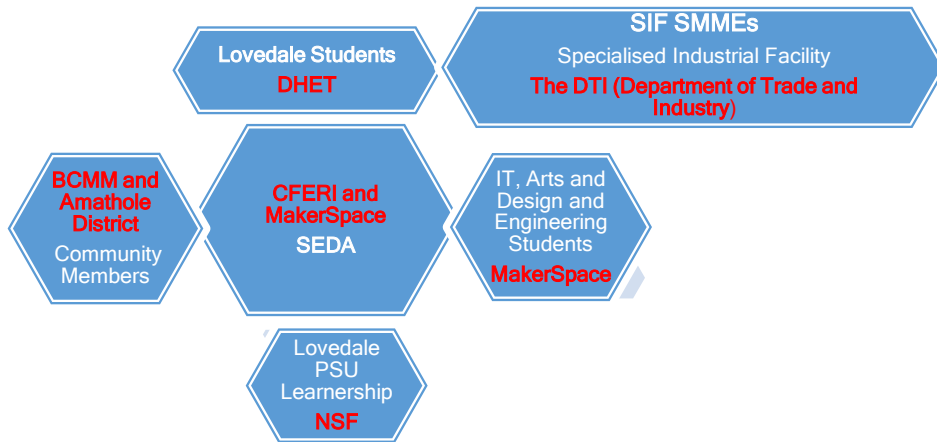
8.3 CFERI SUCCESS STORIES

BUSINESS NAME	SITE	TYPE OF FARMING/BUSINESS
Lovedale Alice Campus students	Knob Farm	Crops, pig feed production and poultry farming
Lolo mixed farming	University of Forth Hare	Crop Production and farming
Vusabatsha Co-op	King William's Town	Crop Production (potatoes, cabbage and spinach)
Mdaka Enterprise	Butterworth	Live Stock (sheep and chickens/ poultry farming)
Gubtako Enterprise	Comfimvaba	Crop Production (spinach, butternut, potatoes and cabbage)
Ukwenza Kwabafazi	Ndevena, Qonce	Poultry
Mayford & Sons projects	East London	Piggery, Poultry and Crop Production
Flexxy City Gym	Ndevana, Qonce	Health & fitness sector
Luniko Hats and Accessories	Dimbaza Qonce	Fashion Design
AS Mpofu Trading	Peddie	Poultry farming
Iliso Body Works	Sweetwaters, Qonce	Car repairs
Richard's Commercial Pottery	Alice	Arts & craft
Simile Ntabakandoda Youth Agricultural	Debenek	Farming
Zuwakhe Trading	Middledrift	Vegetable Farming
Bantustic Graphics	Alice	Printing services (t-shirts) & graphic design
Nohobile Poultry Project	Ngqamakwe	Poultry farming
Agri-Park Investment	Qonce	Farming

8.4 STUDENT ENTREPRENEURSHIP SUPPORT TEAM

Lovedale TVET College Academic Services Department, Partnership skills Unit (PSU) together with the CFERI has established a team pertaining to Student Entrepreneurship Support Programme (SESP). One of the concluding points of concurrence was that a College-wide Student Entrepreneurship Support Team be established to do the following:

1. Draft proposal to various institution to seek funding that will help give life to the SESP.
2. Conjure up ideas and plans on the practically executed and relevant SESP.
3. Coordinate all forms of SESP that campuses are expected to participate in going forward.



Above: Student Entrepreneurship Support Programme

8.5 CFERI MAKERSPACE

A Makerspace is a community operated workspace where people with common interests, often in computers, machining, technology, science, digital art or electronic art, can meet, socialize and collaborate (makerspace.com, 2017). The Makerspace is about lowering the barriers of entry for people to express their creativity in a physical way. It is about people getting together, working creatively, inspiring each other, engaging with new technology, and building a “bottom-up economy.” The Centre has expanded the current service footprint to the Lovedale King William’s Campus through the CFERI Makerspace. This will ensure that a broader student community has access to the Centre. The expansion will also foster opportunities for small business from the greater King William’s Town catchment area to have access the centre. The Lovedale Incubatees Makerspace has been established at the King William’s Town campus which is close to the Zwelitsha Campus School of Artisans and Engineering and King Campus School of Business and ICT (Information, Communication and Technology). This will create a pipeline for the Makerspace and Incubatees by attracting engineering and IT students and dually expand the client focus area of Agriculture to Engineering as well.

The plans to expand and grow the centre led to the college and CFERI to recruit additional staff (ICT Technician MakerSpace) in order to build capacity and serve the client effectively and efficiently.

PICTURE GALLERY

CFERI Makerspace at Lovedale, Qonce Campus

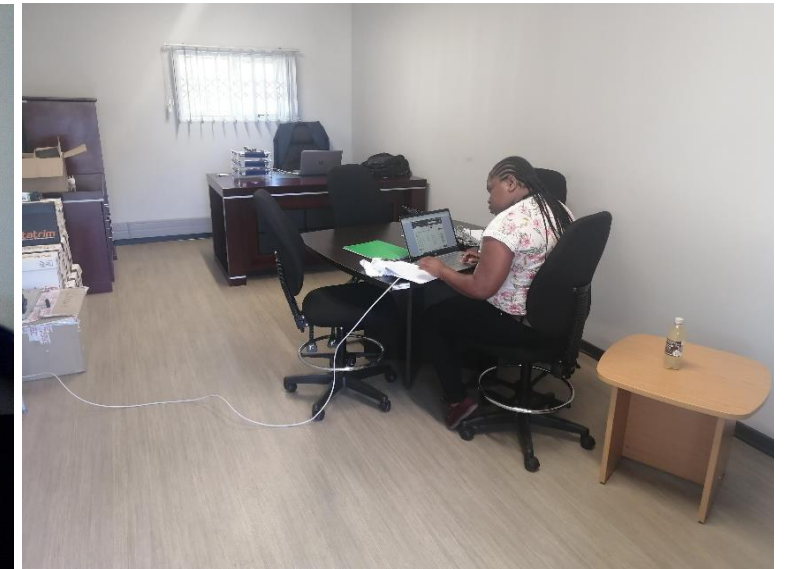
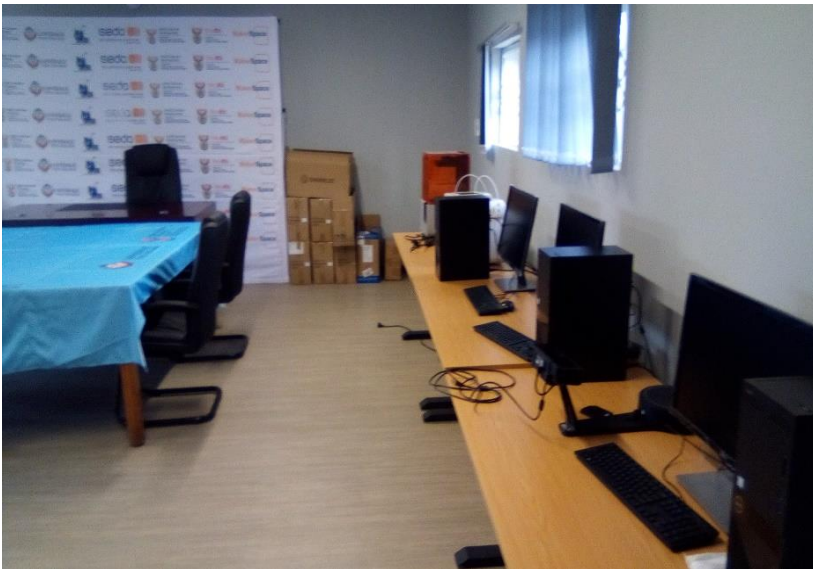
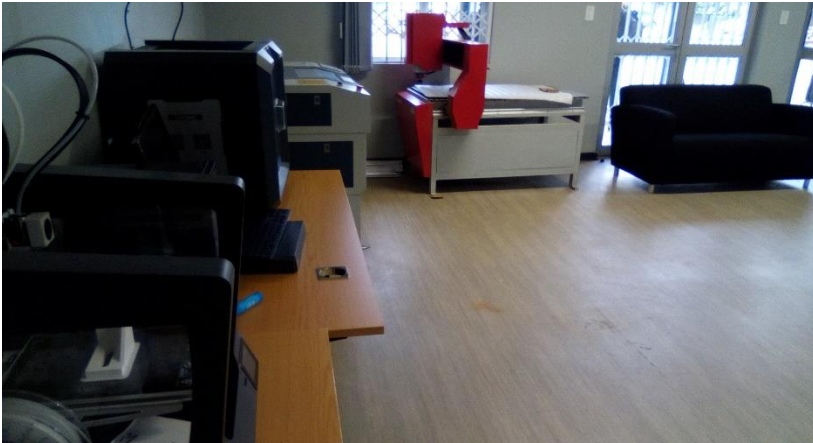


Above: machinery in the CFERI Makerspace and exterior of the Makerspace building



Above: Furniture in the Makerspace

Below: Interior of the Makerspace



Pictured below: Various successful businesses

